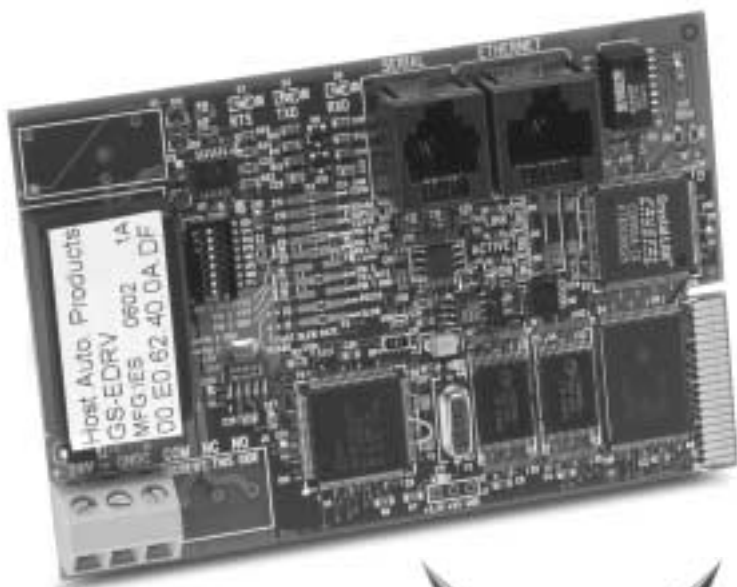




GS Series AC Drive Ethernet Interface User Manual



WARNING

Thank you for purchasing automation equipment from Automationdirect.com™. We want your new automation equipment to operate safely. Anyone who installs or uses this equipment should read this publication (and any other relevant publications) before installing or operating the equipment.

To minimize the risk of potential safety problems, you should follow all applicable local and national codes that regulate the installation and operation of your equipment. These codes vary from area to area and usually change with time. It is your responsibility to determine which codes should be followed, and to verify that the equipment, installation, and operation is in compliance with the latest revision of these codes.

At a minimum, you should follow all applicable sections of the National Fire Code, National Electrical Code, and the codes of the National Electrical Manufacturer's Association (NEMA). There may be local regulatory or government offices that can also help determine which codes and standards are necessary for safe installation and operation.

Equipment damage or serious injury to personnel can result from the failure to follow all applicable codes and standards. We do not guarantee the products described in this publication are suitable for your particular application, nor do we assume any responsibility for your product design, installation, or operation.

Our products are not fault-tolerant and are not designed, manufactured or intended for use or resale as on-line control equipment in hazardous environments requiring fail-safe performance, such as in the operation of nuclear facilities, aircraft navigation or communication systems, air traffic control, direct life support machines, or weapons systems, in which the failure of the product could lead directly to death, personal injury, or severe physical or environmental damage ("High Risk Activities"). Automationdirect.com™ specifically disclaims any expressed or implied warranty of fitness for High Risk Activities.

For additional warranty and safety information, see the Terms and Conditions section of our catalog. If you have any questions concerning the installation or operation of this equipment, or if you need additional information, please call us at 770-844-4200.

This publication is based on information that was available at the time it was printed. At Automationdirect.com™ we constantly strive to improve our products and services, so we reserve the right to make changes to the products and/or publications at any time without notice and without any obligation. This publication may also discuss features that may not be available in certain revisions of the product.

Trademarks

This publication may contain references to products produced and/or offered by other companies. The product and company names may be trademarked and are the sole property of their respective owners. Automationdirect.com™ disclaims any proprietary interest in the marks and names of others.

**Copyright 2002, Automationdirect.com™ Incorporated
All Rights Reserved**

No part of this manual shall be copied, reproduced, or transmitted in any way without the prior, written consent of Automationdirect.com™ Incorporated. Automationdirect.com™ retains the exclusive rights to all information included in this document.

⚡ AVERTISSEMENT ⚡

Nous vous remercions d'avoir acheté l'équipement d'automatisation de Automationdirect.comMC. Nous tenons à ce que votre nouvel équipement d'automatisation fonctionne en toute sécurité. Toute personne qui installe ou utilise cet équipement doit lire la présente publication (et toutes les autres publications pertinentes) avant de l'installer ou de l'utiliser.

Afin de réduire au minimum le risque d'éventuels problèmes de sécurité, vous devez respecter tous les codes locaux et nationaux applicables régissant l'installation et le fonctionnement de votre équipement. Ces codes diffèrent d'une région à l'autre et, habituellement, évoluent au fil du temps. Il vous incombe de déterminer les codes à respecter et de vous assurer que l'équipement, l'installation et le fonctionnement sont conformes aux exigences de la version la plus récente de ces codes.

Vous devez, à tout le moins, respecter toutes les sections applicables du Code national de prévention des incendies, du Code national de l'électricité et des codes de la National Electrical Manufacturer's Association (NEMA). Des organismes de réglementation ou des services gouvernementaux locaux peuvent également vous aider à déterminer les codes ainsi que les normes à respecter pour assurer une installation et un fonctionnement sûrs.

L'omission de respecter la totalité des codes et des normes applicables peut entraîner des dommages à l'équipement ou causer de graves blessures au personnel. Nous ne garantissons pas que les produits décrits dans cette publication conviennent à votre application particulière et nous n'assumons aucune responsabilité à l'égard de la conception, de l'installation ou du fonctionnement de votre produit.

Nos produits ne sont pas insensibles aux défaillances et ne sont ni conçus ni fabriqués pour l'utilisation ou la vente en tant qu'équipement de commande en ligne dans des environnements dangereux nécessitant une sécurité absolue, par exemple, l'exploitation d'installations nucléaires, les systèmes de navigation aérienne ou de communication, le contrôle de la circulation aérienne, les équipements de survie ou les systèmes d'armes, pour lesquels la défaillance du produit peut provoquer la mort, des blessures corporelles ou de graves dommages matériels ou environnementaux («activités à risque élevé»). La société Automationdirect.comMC nie toute garantie expresse ou implicite d'aptitude à l'emploi en ce qui a trait aux activités à risque élevé.

Pour des renseignements additionnels touchant la garantie et la sécurité, veuillez consulter la section Modalités et conditions de notre documentation. Si vous avez des questions au sujet de l'installation ou du fonctionnement de cet équipement, ou encore si vous avez besoin de renseignements supplémentaires, n'hésitez pas à nous téléphoner au 770-844-4200.

Cette publication s'appuie sur l'information qui était disponible au moment de l'impression. À la société Automationdirect.com, nous nous efforçons constamment d'améliorer nos produits et services. C'est pourquoi nous nous réservons le droit d'apporter des modifications aux produits ou aux publications en tout temps, sans préavis ni quelque obligation que ce soit. La présente publication peut aussi porter sur des caractéristiques susceptibles de ne pas être offertes dans certaines versions révisées du produit.

Marques de commerce

La présente publication peut contenir des références à des produits fabriqués ou offerts par d'autres entreprises. Les désignations des produits et des entreprises peuvent être des marques de commerce et appartiennent exclusivement à leurs propriétaires respectifs. Automationdirect.comMC nie tout intérêt dans les autres marques et désignations.

**Copyright 2002, Automationdirect.com™ Incorporated
Tous droits réservés**

Nulle partie de ce manuel ne doit être copiée, reproduite ou transmise de quelque façon que ce soit sans le consentement préalable écrit de la société Automationdirect.com™ Incorporated. Automationdirect.com™ conserve les droits exclusifs à l'égard de tous les renseignements contenus dans le présent document.



GS SERIES AC DRIVE ETHERNET INTERFACE USER MANUAL

Please include the Manual Number and the Manual Issue, both shown below, when communicating with Technical Support regarding this publication.

Manual Number: GS-EDRV-M

Issue: First Edition

Issue Date: 8/02/02

Publication History		
Issue	Date	Description of Changes
First Edition	8/02/02	Original

TABLE OF CONTENTS



In This Manual...

Manual Overview	2
GS AC Drive Ethernet Interface Overview	3
GS-EDRV Board Layout	4
Setting the GS-EDRV Address	6
Network Connections	7
GS-EDRV to GS Series AC Drive Connection	8
Setting the GS Series AC Drive Parameters	8
Connecting the GS-EDRV to an ERM Module	9
Built-in Web Server	12
Troubleshooting	12

Manual Overview

Overview of this Publication

The GS AC Drive Ethernet Interface User Manual describes the installation, configuration, and operation of the GS AC Drive Ethernet Interface card.

Who Should Read This Manual

This manual contains important information for those who will install, maintain, and/or operate any GS Series AC Drive Ethernet Interface card.

Supplemental Publications

The **Ethernet Remote Master Module Manual** (H24-ERM-M) is available from **AutomationDirect** and may be useful for your application.

Technical Support

By Telephone: 770-844-4200
(Mon.-Fri., 9:00 a.m.-6:00 p.m. E.T.)

On the Web: www.automationdirect.com

Our technical support group is glad to work with you in answering your questions. If you cannot find the solution to your particular application, or, if for any reason you need additional technical assistance, please call technical support at **770-844-4200**. We are available weekdays from 9:00 a.m. to 6:00 p.m. Eastern Time.

We also encourage you to visit our web site where you can find technical and non-technical information about our products and our company. Visit us at **www.automationdirect.com**.

Special Symbols



When you see the “notepad” icon in the left-hand margin, the paragraph to its immediate right will be a special note.



When you see the “exclamation mark” icon in the left-hand margin, the paragraph to its immediate right will be a **WARNING**. This information could prevent injury, loss of property, or even death (in extreme cases).

GS AC Drive Ethernet Interface Overview

The Ethernet Interface for GS Series AC Drives (GS-EDRV) provides a low-cost, high-performance Ethernet link between a PLC/PC-based Control system and GS Series AC Drive. The GS-EDRV mounts on DIN rail and communicates through cable connections to the AC drive and Ethernet hub or PC.

The function of the interface is to:

- process input signals from the AC drive
- format the signals to conform to the Ethernet standard
- transmit the signals to the PC-based controller
- receive and translate output signals from the PLC/PC-based Control software
- distribute the output signals to the appropriate drive

The control function is not performed by the interface. The control function is performed by PC-based Control software (which is purchased separately) running on a PC.

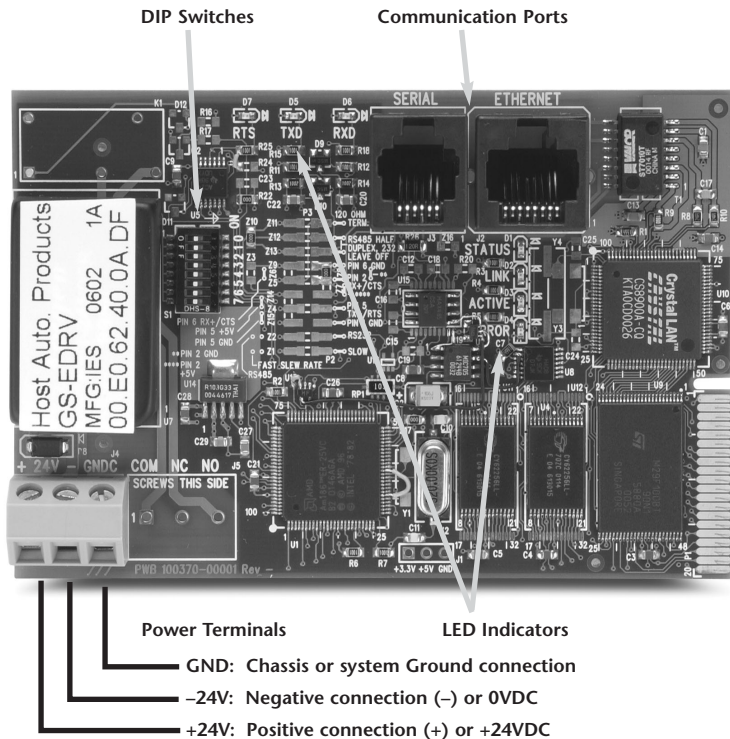
Package Contents

After receiving the GS-EDRV, please check for the following:

- Make sure that the part number indicated on the package corresponds with the part number of your order.
- Make sure that the package includes a GS AC Drive Ethernet Interface card, one piece of **SNAPTRACK™**, two DIN mounting clips, and one serial connection cable.
- Inspect the contents to insure they were not damaged during shipment.



GS-EDRV Board Layout



Power Terminals

Power for the GS-EDRV is connected directly to the card using a nominal 24VDC supply (+24VDC, -0VDC). The GNDC terminal is for a chassis or system Ground.

Input Voltage

18-33 VDC with a 24VDC nominal supply

Input Current

90-135 mA

Communication Ports

Two comm ports are provided to make a connection from a GS Series AC drive (Serial port) to an Ethernet device or network (Ethernet port)

DIP Switches

The DIP Switches are used to set the Ethernet network address for the GS-EDRV card

LED Indicators

STATUS Indicator

The green STATUS LED is steady on when the GS-EDRV is connected to a GS Series AC drive and communications have been established.

LINK

The green LINK LED is steady on when the GS-EDRV is correctly connected to an active device on the network and is receiving 5VDC operating voltage. The LINK LED verifies that the proper cables are connected, and the card is functioning correctly. If a mismatch with the 10BaseT connections occurs this LED will not be illuminated.

ACTIVE

The green ACTIVE LED flashes to indicate that the card sees data travelling on the network. If any network device is sending or receiving data, the ACTIVE LED will be illuminated. In idle mode (no network traffic) this LED is OFF. During heavy communication loads this LED will be steady on.

ERROR Indicator

If the GS-EDRV's red Error (ERROR) indicator is flashing or steady on, a fatal error has occurred. The error may be in the card itself, or a network problem may be causing this symptom. The ERROR indication can be caused by a faulty ground, an electrical spike or other types of electrical disturbances. Cycle power to the system to attempt clearing the error.

RTS

The green RTS LED indicates the GS-EDRV is ready to send information to the AC drive.

TXD

The green TXD LED flashes to indicate that the card sees data travelling to the AC drive. During heavy communication loads this LED will be steady on

RXD

The green RXD LED flashes to indicate that the card sees data traveling from the AC drive. During heavy communication loads this LED will be steady on.

Setting the GS-EDRV Address

Each GS-EDRV must have an identification (ID) or address in order to be recognized on the network, and each ID must be unique. Duplicate IDs on the same network will cause unpredictable results and must be avoided.



WARNING: Duplicate IDs on the same network will cause unpredictable results and must be avoided.

Setting Module ID with DIP Switches

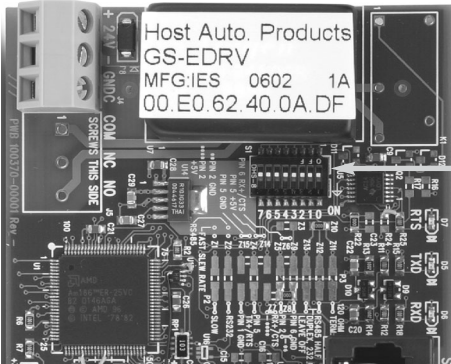
You can use the DIP switch to set the ID to a number from one to sixty-three. Do not use ID "0" for communications. The only purpose of ID "0" is to allow communications with a PC while changing the ID.

If the DIP switch is set to a number greater than 0, the software tools are disabled from setting the ID. Again, the software tools will only allow changes to the ID if the DIP switch setting is 0 (zero, all switches OFF).

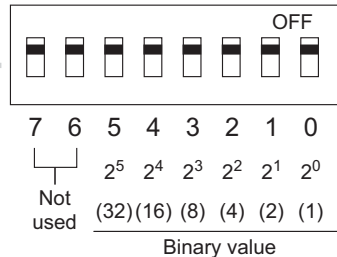


Note: The DIP switch settings are read only at power-up. You must cycle power if you change the DIP switches.

The GS-EDRV DIP switch contains eight individual switches, but only six of these are active. You will find that the printed circuit board is labeled 0 (zero) through 7. The numbers on the printed circuit board indicate the power of 2 represented by each individual switch. For example, switch 0 represents 2^0 (or 1), switch 1 is 2^1 (or 2), switch 2 is 2^2 (or 4), and so on.

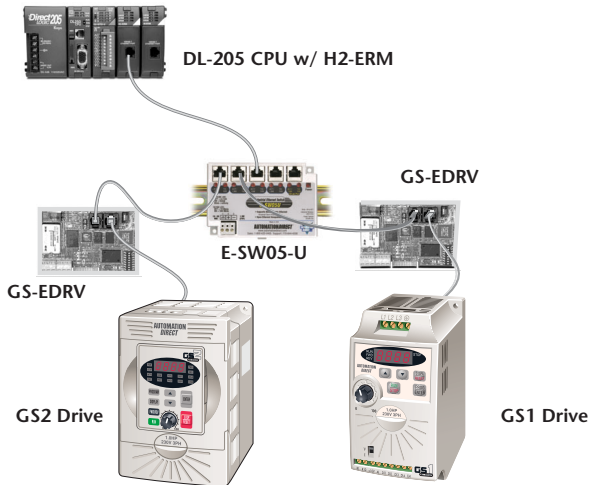


DIP Switches



The ID equals the sum of the binary values of the slide switches set in the ON position. For example, if you set switches 1, 2, and 3 to the ON position, the ID will be 14. This is found by adding $8+4+2=14$. The maximum value you can set on the DIP switch is $32+16+8+4+2+1=63$. This is achieved by setting switches 0 through 5 to the ON position.

Network Connections



10BaseT Connections

The GS-EDRV has an eight-pin modular jack that accepts RJ45 connector plugs. UTP (Unshielded Twisted-Pair) cable is rated according to its data-carrying ability (bandwidth) and is given a “category” number. We strongly recommend using a category 5 cable for all Ethernet 10BaseT connections. For convenient and reliable networking, we recommend that you purchase commercially manufactured cables (cables with connectors already attached).

To connect an GS-EDRV (or PC) to a hub or repeater, use a patch cable (sometimes called a straight-through cable). The cable used to connect a PC directly to an GS-EDRV or to connect two hubs is referred to as a crossover cable.

Patch (Straight-through) Cable				Crossover Cable			
EDRV			HUB	EDRV			PC
TD+ 1	OR/WHT	OR/WHT	1 RD+	TD+ 1	OR/WHT	GRN/WHT	1 TD+
TD- 2	OR	OR	2 RD-	TD- 2	OR	GRN	2 TD-
RD+ 3	GRN/WHT	GRN/WHT	3 TD+	RD+ 3	GRN/WHT	OR/WHT	3 RD+
4	BLU	BLU	4	4	BLU	BLU	4
5	BLU/WHT	BLU/WHT	5	5	BLU/WHT	BLU/WHT	5
RD- 6	GRN	GRN	6 TD-	RD- 6	GRN	OR	6 RD-
7	BRN/WHT	BRN/WHT	7	7	BRN/WHT	BRN/WHT	7
8			8	8	BRN	BRN	8
RJ45			RJ45	RJ45			RJ45

This diagram illustrates the standard wire positions in the RJ45 connector. We recommend all Ethernet 10BaseT cables to be Category 5, UTP cable.

GS-EDRV to GS Series AC Drive Connection

A serial connection cable (2 ft. in length) is provided with the GS-EDRV to make an RS-485 connection with a GS Series AC Drive.



*Note: When using the **GS2 Series AC Drive**, DIP Switch 2 and 3 (SW2 and SW3) must be set to RS485.*



Switches SW2 and SW3 must be set to RS485 for an RS-485 connection (GS2 Series Only).

Setting the GS Series AC Drive Parameters

The following parameters need to be set in the GS Series AC Drive in order to operate properly with the GS-EDRV interface card.

- P 3.00: 03 or 04 – Operation Determined by RS232C/RS485 interface. Keypad STOP is enabled (03) or disabled (04).
- P 4.00: 05 – Frequency determined by RS232/RS485 communication interface
- P 9.00: xx – Communication address 1-254 (unique for each device)



Note: The previous list of parameter settings are the minimum required to communicate with a GS Series AC Drive through a GS-EDRV interface card. There may be other parameters that need to be set to meet the needs of your application.

Connecting the GS-EDRV to an ERM Module

The GS-EDRV interface card can be added to any H2(4)-ERM module using the ERM Workbench Utility. For more details on selecting and configuring slaves for the ERM module, see CHAPTER 4 of the H24-ERM-M.

Reserved PLC Memory for the GS-EDRV

Once the GS-EDRV is added the ERM module, 15 WORD inputs and 11 WORD outputs are mapped back to the PLC. The assigned PLC addresses are shown in the ERM Workbench Utility.

Ethernet Remote Master: H2-ERM Ethernet Address: 00 E0 62 20 0F 9A IP: 255.255.255.255 Module ID: 0

CPU Interface: PLC CPU: 240
Last ERM Error: no error PLC Mode: Program

Read ERM Status Time of last read: 15:47:06
Detailed ERM Status...

Slave Status

1	2	3	4	5	6	7	8
9	10	11	12	13	14	15	16

Click on slave # above to see its Last Error: Slave 1 - no error
Clear Last Error Slave 1

1. Configure ERM...
2. Select Slaves...
3. Write to ERM...

I/O Module	I/O Points	PLC Start	PLC End	V-Map	Notes
<reserved>	Slave Status Bits	X300	X317	V4044	
	ERM Status Word	X320	X337	V4045	
	Disable Slave Command Bits	Y300	Y317	V4054	
Slave 1	HA-EDRVGS				Ethernet Address[00 E0 62 40 00 11] on IPX:
Slave 1/Slot 0	3 Word Input	V2000	V2002		
Slave 1/Slot 1	10 Word Input	V2003	V2014		← 15 Input Words
Slave 1/Slot 2	2 Word Input	V2015	V2016		
Slave 1/Slot 3	4 Word Output	V2100	V2103		
Slave 1/Slot 4	5 Word Output	V2104	V2110		← 11 Output Words
Slave 1/Slot 5	2 Word Output	V2111	V2112		

Ready Read ERM Status : AUTO MODIFIED

Input/Output Word Map

The Input and Output WORDS for the GS-EDRV are mapped to specific parameters and functions in the GS Series AC Drives. The following tables show the Input and Output words and their functions.

Input Word Map		
Input Word	Parameter Reference	Function
1	N/A	Present Output Frequency
2	N/A	Present Output Current
3	P 9.29	External Fault (0=No Fault, 1=External Fault)
4	P 9.16	Block Transfer Parameter 6 - User defined read value
5	P 9.17	Block Transfer Parameter 7 - User defined read value
6	P 9.18	Block Transfer Parameter 8 - User defined read value
7	P 9.19	Block Transfer Parameter 9 - User defined read value
8	P 9.20	Block Transfer Parameter 10 - User defined read value
9	P 9.21	Block Transfer Parameter 11 - User defined read value
10	P 9.22	Block Transfer Parameter 12 - User defined read value
11	P 9.23	Block Transfer Parameter 13 - User defined read value
12	P 9.24	Block Transfer Parameter 14 - User defined read value
13	P 9.25	Block Transfer Parameter 15 - User defined read value
14	Read/Write Response	Response to a read/write request (Output Word 10) Bit: 00-07 = Memory Reference 08-11 = Memory type number (0 to 9 for P0 to P9) 12-13 = Operation: 00=NOP, 01=Read, 10=Write, 11=Undefined 14 = If set, an error has occurred. Error Code is stored in Word 15.
15	Read Request Value	If Input Word 14 is a Read response, the value is stored here. If Input Word 14 is and Error response, the error code is stored here. Error Codes: 0x8010 HEIE_INVALID_REQUEST 0x8090 HEIE_NOT_INITIALIZED 0x8096 HEIE_INVALID_OPERATION 0x006F HEIE_INVALID_TYPE 0x0091 HEIE_INVALID_MODE 0x008C HEIE_INVALID_ADDRESS 0x0085 HEIE_RANGE_ERROR 0x006D HEIE_SIZE_ERROR

Output Word Map		
Output Word	Parameter Reference	Function
1	P 9.27	RUN Command
2	P 9.26	RS485 Speed Reference
3	P 9.28	External Fault (0=No Fault, 1=External Fault)
4	P 9.30	Block Transfer Parameter 6 - User defined read value
5	P 9.11	Block Transfer Parameter 7 - User defined read value
6	P 9.12	Block Transfer Parameter 8 - User defined read value
7	P 9.13	Block Transfer Parameter 9 - User defined read value
8	P 9.14	Block Transfer Parameter 10 - User defined read value
9	P 9.15	Block Transfer Parameter 11 - User defined read value
10	Read/Write Request	Response to a read/write request (Output Word 10) Bit: 00-07 = Memory Reference 08-11 = Memory type number (0 to 9 for P0 to P9) 12-13 = Operation: 00=NOP, 01=Read, 10=Write, 11=Undefined 14 = Undefined for request
11	Write Request Value	If Output Word 10 is a Write request, the value to be written is placed here.

Word Outputs 10 and 11 are used in conjunction with Word Inputs 14 and 15 to Read/Write AC drive parameters that are not mapped to other Input and Output Words.

Example

To read P 0.00, you would write value 0x1000 into Output Word 10, and the value 0x9000 would come back in Input Word 14. The value read from P 0.00 would be in Input Word 15.

To read P 9.42, you would write value 0x192A into Output Word 10, and the value 0x992A would come back into Input Word 14. The value read from P 9.42 would be in Input Word 15.

By using Output Word 10 and 11 and Input Words 14 and 15, you have the ability to read/write most AC drive parameters.



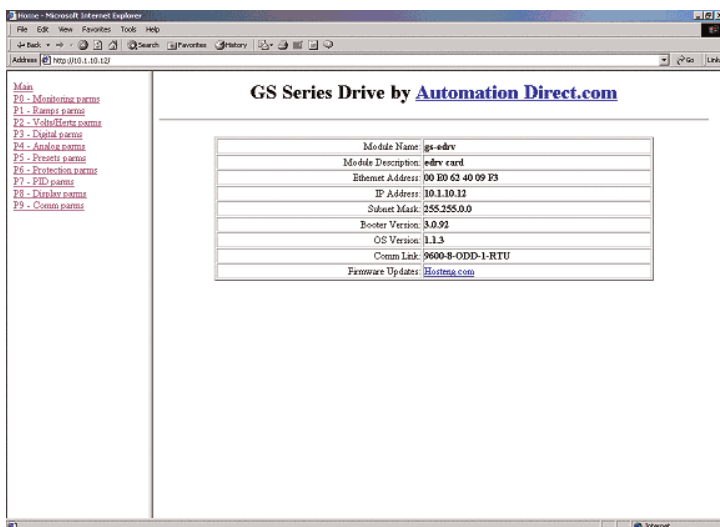
Note: The Communication Parameters (P 9.xx range) cannot be written by using these Input/Output Words. However, the values from these parameters can be read..

Built-in Web Server

The GS-EDRV interface card has a built-in Web Server that allows you to access AC drive data with your favorite Web browser. In order to access the internal Web Server, you must first assign an IP address to the GS-EDRV card. The IP address can be assigned by using the NetEdit utility. You can then access the GS-EDRV card by typing the IP address into your Web browser.

Example

If the IP address is 192.168.10.12, just enter **http://192.168.10.12** into the address field of your browser and press the **Enter** key. The browser will then access the built-in GS-EDRV Web Server. The available parameter groups are shown on the left and the parameter options are shown on the right.



Troubleshooting

Troubleshooting help for the ERM module and its slaves is available in CHAPTER 6 of the Ethernet Remote Master User Manual (H24-ERM-M).



GS-EDRV-M